



**MIKE FASANO**

**TAX COLLECTOR/PASCO COUNTY/FLORIDA**

POST OFFICE BOX 276/DADE CITY, FLORIDA 33526-0276

## DRIVING SKILLS ROAD TEST CHECKLIST

This form is being provided to you to prepare you for your driving test. Please read this form and ask questions about anything you are unsure of prior to starting your test. Every customer is required to provide a safe vehicle in good working order for their driving test. The examiner/tax collector licensing agent will inspect your vehicle before the test is started. The vehicle must:

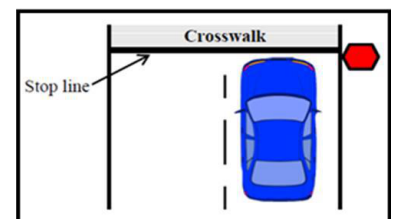
1. Have a valid license plate.
2. Have a valid vehicle registration.
3. Have proof of valid Personal Injury Protection and Property Damage Liability Insurance.
4. Pass a vehicle safety inspection.
5. Have operable seatbelts (exception: cars manufactured prior to 1968 and trucks manufactured prior to 1972).

During the driving test, the examiner will give you directions as to where to go and what to do next. There are no tricks on the driving test and you will not be asked to do anything illegal. Pay close attention to the instructions and obey speed limits and traffic laws at all times. Remain calm at all times and perform the maneuvers to the best of your ability.

**\*\*\* THE EXAMINER'S DECISION ABOUT YOUR PERFORMANCE IS FINAL IN ALL CASES \*\*\***

You are expected to perform the following maneuvers on the driving test:

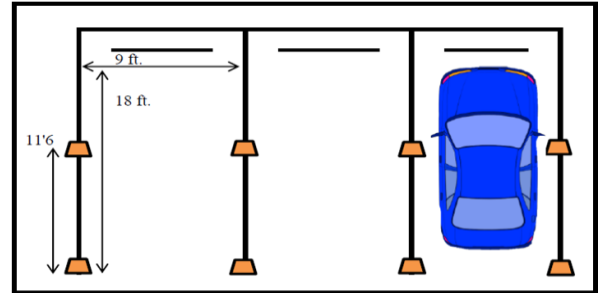
- **Approach of Crossing** - Get in the proper lane and look in each direction. Change gears smoothly and correctly (if your car has a manual shift transmission).
- **Backing** - Back for a distance of 50 feet at a slow speed. Do not use the rear-view mirror when backing. Look to the rear instead.
- **Follow at a Safe Distance** - Do not drive too closely behind other cars. Use the Four Second Rule.
- **Observe Right-of-Way** - Allow pedestrians to cross, pull over and stop for emergency vehicles and do not enter an intersection where you will interfere with other traffic.
- **Obey Stop Signs** - Give the proper signal if turning, approach in the proper lane, come to a complete stop before reaching the pedestrian crosswalk or stop line, and remain stopped until you can move safely without interfering with cross traffic or pedestrians. Keep in mind that most intersections contain legal crosswalks; marked or unmarked. An unmarked crosswalk is the portion of the roadway at an intersection that would connect opposite sides of the street.
- **Obey Traffic Signals** - Get into the proper lane and approach the light at a speed that will allow you to stop if the light should change. When you must stop, stop before the pedestrian crosswalk or stop line. When the light turns green, do not move forward until the other traffic has cleared the intersection. Give the correct signal for stopping and turning. Watch for "no turn" and "one way" signs.



- **Passing** - Always look ahead and behind to make sure you can pass safely. Pass on the left, unless the car ahead is about to make a left turn or is in the left turn lane on a street with more than one lane in each direction. Do not pass on the shoulder (side of the road).

- **Shift Gears** -Change gears smoothly and correctly (if your car has a manual shift transmission).

- **Straight-In Parking** - Park your vehicle inside the parking space straight-in. When properly parked, the vehicle should be centered inside the space with no part of the vehicle extending out in the traffic lane. This maneuver gives the examiner the opportunity to observe your ability to:



- handle the vehicle in close quarters
- judge distance
- maintain control of the vehicle as you turn into a straight-in parking space

- **Stop/Start on a Grade** - If there is no hill on your driving test, this maneuver is simulated when the car is in the straight-in parking space or when the car is pulled over to the side of the road before the turnabout maneuver. You will be instructed to show or tell the examiner what you would do if you were going to leave the vehicle parked up or down a hill, with or without a curb.

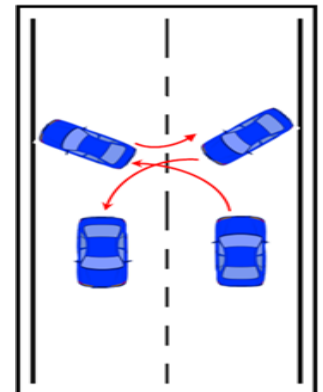
- **Stop Quickly** - Drive at 20 miles per hour and make a quick, safe stop when the examiner instructs you.

- **Signal and Turn** - Get into the proper lane and signal your turn for the last 100 feet. You may use either hand signals or mechanical signals. Slow before reaching the crosswalk and turn into the proper lane.

- **Stay in Proper Lane** - Drive in the right lane except on a one-way street. Do not change lanes until you may do so safely.

- **Turn About** (Three Point Turn) - Turn your car around in a 30' to 40' space.

- **Use Proper Posture** - Keep both hands on the steering wheel and do not rest your elbow in the window.



The examiner will explain any mistakes you may have made after the test is completed. If you disqualify on the driving test, you will be asked to study or practice and return another day for additional tests.

If you pass the examination, the examiner will collect the fee and issue your license. If you surrender a valid Florida learner's license and do not need to make changes, you are not charged for the replacement Class E; however, a \$6.25 tax collector service fee will be required if services are received at a tax collector office.